



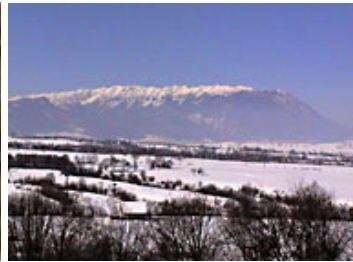
## Tracking Wolves and Bears in Transylvania A Mammal Monitoring Project

Romania is a land of majestic castles, medieval towns, amazing hiking and a huge array of wildlife. Much of the country is wild and untouched and as a result it has the largest number of bears and wolves in Europe.

The Romania Mammal Monitoring Project will focus on the wildlife of Romania, giving you the opportunity to work alongside scientists Christoph and Barbara Promberger, identifying mammals by their tracks. Traveling across great areas of untouched land you will be required to track wolves, bears or lynx; study the habitat of river otters and martens; set camera traps to study the behaviour and patterns of Romania's mammals and amass as much data as possible to support Christoph and Barbara in their work.

The projects undertaken on this trip will contribute greatly to ongoing local projects, covering almost a winters worth of work in two weeks. It will also be part of a much larger project across Sinca Noua to ensure the sustainability of the environment.

You will be joined on the trip by SES co-ordinator Dr Michael Perring, Chairman to the SES Council and Anneka Svenska, wildlife presenter and active supporter of the UK Wolf Trust.



### Day One 25<sup>th</sup> January 2009

Depart the UK and arrive in Bucharest. Here you will be collected by the tracking team and taken to the main base camp. You will arrive at 7 to 8 pm, giving you time to have a good meal and an early night.

### Day Two 26<sup>th</sup> January 2009

Today is a full day of briefing on the different projects. You will be shown how to use the equipment, snowshoes, GPS, radios, sat phones, cameras, tents, stoves and maps. You will be briefed on how to deal with difficult terrain and will be given very basic first aid information and procedures. You will also be briefed in detail about each project and how to complete the forms in the best way.

Groups will be made up of 3 or 4 people plus one guide and you will all work on a rotation to ensure everyone gets a chance to be involved in each project. There will be time at the end of the day to work with your group to prepare equipment and pack for an early deployment the next day.

### Day Three - Eleven 27<sup>th</sup> - January – 4<sup>th</sup> February 2009

Over the course of the next nine days you will rotate through the three major projects:

#### Group one and two: Large mammal tracking

This is the back bone of the study, with two teams working together to cover the two areas: tough terrain and easier terrain. Group one will head to harder, more remote areas. The second group will be on more undulating terrain. Both groups will return either to a cabin each night or back to base, deployed out each morning to their area of survey. Both groups have equal chance of seeing tracks or having sightings.

Voyage

This itinerary is the property of SES in association with Voyage  
Voyage, 81-83 Victoria Road, Surbiton, Surrey KT6 4NS  
Tel: +44 (0)20 8399 6060/9090 Fax: +44 (0)20 8339 9171 [www.voyageconcepts.co.uk](http://www.voyageconcepts.co.uk)  
Voyage is a trading name of Ickenham Travel Group Plc, ATOL 4950

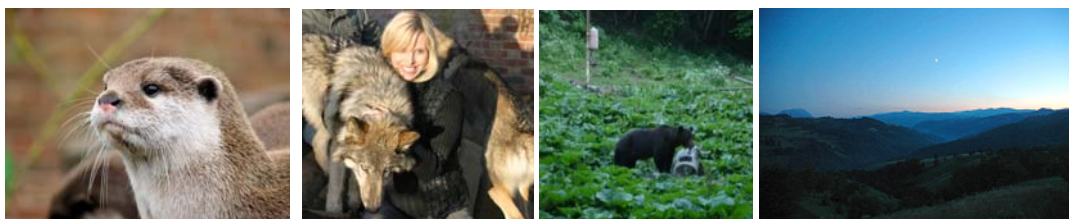
## Continued...

When tracks are discovered they will be recorded and then, if they look promising, followed. If the group gets a sighting then the same procedure can be undertaken, but be warned – this is a remote area and you will be smelt, seen, heard and distanced from, long before you've spotted anything! Nothing can beat the feeling when you do get a chance sighting though, or are in the hide watching as wolves or bears feed – a real chance to get up close to true wild animals.

### Group three: River Otters

Last year river otters were spotted in the Strimba river and it is thought they have set up home here. This time of year is the best to try and get a better idea of where they are, how many of them there is and what is their range.

Trekking up the river banks on both sides, looking for traces of these animals, will involve crossing areas that are in parts frozen and part of the study will include marking any bridges or crossing points. As with Project 1 there will be harder more remote sections and easier sections to suit client needs.



### Group four: Marten study

There have already been 99 different species identified in the area and the purpose of this study is to get a better idea of populations and spread of the areas in which they now inhabit.

The project will involve walking transect lines and recording the tracks and sightings during a day. Again there are easier and harder locations for this study and therefore can be suited for the groups.

### Day Twelve 5<sup>th</sup> February 2009

All groups would have returned to base last night ready to spend the day clearing up the equipment and entering the collated data from the past two weeks in the field on to laptops. A presentation is then given by each of the groups on their last project.

### Day Thirteen 6<sup>th</sup> February 2009

Today we will be driven into Bucharest for an overnight stay where people are free to explore the city before a final end of expedition dinner which will be held at a local restaurant.

### Day Fourteen 7<sup>th</sup> February 2009

A free morning in Bucharest before a transfer to the airport and flight back to the UK.

<b>Includes:</b>	Flights, accommodation, transfers, meals, guides, equipment, scientific support and pre-trip briefing at the Natural History Museum
<b>Excludes:</b>	Insurance (this can be arranged through Voyage at request) and personal spending money
<b>Trip dates:</b>	25 <sup>th</sup> January 2009 – 7 <sup>th</sup> February 2009
<b>Is it for you?</b>	This trip will take you to the wilds of Romania, it can be challenging at times and you may be expected to trek for up to 6 hours per day. The work you will be doing will have real scientific relevance and you should be motivated in your group mission to help protect the Sinca Noua and create a sustainable environment
<b>Cost:</b>	£2950 per person

Voyage